

 52 S

Technical specifications


LAGOON

Contents

Technical data	2
Construction.....	3
Sails and rigging.....	3
Hardware.....	3
Mooring and anchoring	4
Engine.....	4
Plumbing.....	4
Electrical	5
Deck layout.....	5
Windows, openings and ventilation	8
Interior layouts	8
3 cabin 3 bathroom version.....	9
4 cabin 4 bathroom version	14
5 cabin 5 bathroom version.....	19
6 cabin 6 bathroom version	25

Technical data

Length overall	15.85 m / 52'
Waterline length	15.50 m / 50'1"
Maximum beam	8.60 m / 28'3"
Air draft	27.66 m / 90'9"
Draft	1.50 m / 4'11"
Displacement (CE)	22.5t / 49,606 Lbs.
Upwind sail area (std mainsail)	156 m ² / 1679 sq.ft.
Upwind sail area (square top mainsail)	166 m ² / 1786 sq.ft.
Fully battened mainsail	97 m ² / 1044 sq.ft.
Square top mainsail (option)	107 m ² / 1151 sq.ft.
Self-tacking jib	59 m ² / 635 sq.ft.
Furling genoa (VMG option pack)	70 m ² / 753 sq.ft.
Furling staysail (VMG option pack)	44 m ² / 473 sq.ft.
Spinnaker (VMG option pack)	255 m ² / 2744 sq.ft.
Code 0 (option)	154 m ² / 1657 sq.ft.
Fresh water capacity	4 x 240 L / (4 x 63 US Gal)
Fuel capacity	2 x 496 L / (2 x 131 US Gal)
Engines	2 x 57 hp CR to 2 x 80 hp
Architects	VPLP Design
Exterior Design	Patrick le Quément
Interior Design	Nauta Design
Number of berths	6 to 14
CE Certification	A: 14 ; B: 14 ; C: 16 ; D: 30

NORTH AMERICAN SPECIFICATIONS

Only for boats sold in US

- 120V Electric panel and electric equipment
- US 120V outlets
- Gas propane circuit with solenoid valve

Construction

- Construction: Polyester and high quality anti-osmotic resin
- Hull, deck and coachroof laminated by infusion
- Balsa core hull, solid laminate under waterline, white gel coat
- Balsa core bridge deck and deck
- Laminated or glued marine plywood bulkheads

Sails and rigging

SAILS

- 1 high roach mainsail in Dacron type double ply with battens
- 1 self-tacking jib in Dacron type double ply on furler with UV protective band

STNADING RIGGING

- Anodized aluminum mast with track
- Double spreaders rig
- Anodized aluminum boom
- 2 encased capshrouds
- 2 encased lower shrouds
- 2 shroud chainplates
- 2 forestay chainplates
- 1 forestay with manual furler for self-tacking jib
- Adjustable lazy-jacks
- Deck light on the mast

RUNNING RIGGING

- 1 double purchase Spectra mainsail halyard
- 1 Spectra genoa halyard with tension adjustment track at mast base.
- 1 boom topping lift
- 3 reefing lines
- Genoa sheets
- Mainsail sheet led back to helm station

Hardware

- 1 electric halyard winch 50.2 STEA for mainsail halyard and reefing lines (center of the helm station)
- 2 manual winches for halyards and cunninghams 50.2 STA (on port side and starboard of the helm station)
- Anodized aluminum crossbeam with fixing point for the jib furler, anchor roller and navigation lights

Mooring and anchoring

- Composite longitudinal crossbeam with integrated chain run and mooring cleat
- 8 mooring cleats
- 2000W / 12V electric windlass on the deck, horizontal gypsy (chain 12mm) and corded remote control in the anchor locker
- Access to the windlass and chain locker
- Chain locker located on the starboard side of the windlass

Engines

- 2 diesel engines YANMAR 4JH57 57hp common rail saildrive
- Fixed 3 blades propeller
- Raw water filter
- Electric engine throttles and control panel at the helm station
- 2 foam core spade rudders, stainless steel rudder shafts
- Epoxy rudder tubes
- Upper and lower self-aligning rudder bearings
- Full hydraulic steering system (1 hydraulic strut per rudder)
- Hydraulic central in the starboard engine compartment
- Engine compartment ventilation: natural intake and forced extraction in the aft transom
- Fuel circuit:
 - 2 aluminum tanks of 2 x 496 liters / 131 US gal
 - Fuel filter systems
 - Fuel shut off valve
 - Gauge at the general control panel on touch screen
- Access to the engine compartments from the transom through hatches

Plumbing

FRESH WATER CIRCUIT

- Fresh water tank: 4 x 240L / 63 US gal with gauge at the chart table
Gauge at the general control panel on touch screen
- Fresh water circuit with 1 main water pressure pump
- 60L / 16 US gal electric water heater, 230V/engine heat exchanger for the 3, 4 and 5 cabin version
- 100L / 26 US gal electric water heater, 230V/engine heat exchanger for the 6-cabin version

GREY WATER

- Shower and sink drain to grey water tank and automatic pump
- Galley sinks drain directly overboard

BLACK WATER

- Holding tank for the WC (73 liters / 19 US gal) with deck pump out or gravity drain to sea

BILGE PUMP CIRCUIT

- 1 manual bilge pump in each hull and operated from the cockpit
- 1 manual pump bilge pump in each forepeak and operated from the cockpit
- 1 automatic and electric bilge pump in each engine room
- Automatic and electric bilge pump in each hull + manual override + bilge level alarm in each hull
- Self-draining cockpit compliant to the CE certification

Electrical**POWER CIRCUIT DC – 12V**

- 2 alternators 12V - 80A
- 2 gel start batteries 12V - 48A
- 6 acid service batteries 12V - 140A

Battery circuit breakers in the cupboard of the starboard companionway

ELECTRIC DISTRIBUTION PANEL

- 12V General distribution panel at the chart table with protection by circuit breaker
- 1 touch screen 4,3" to manage: lighting, battery level, fuel and water gauges, navigation lights

LIGHTING

- 12V LED exterior lighting
- Wireless control for lighting centralized on touch screen at chart table
- LED navigation lights
- 12V LED interior lights:
 - 12V LED reading light next to beds
 - LED chart table light – red and white
 - 12V lighting in engine compartments

Deck layout

TRANSOM

- Hot/cold deck shower on starboard
- Removable swim ladder with fixed s/s handle in the starboard transom

AFT COCKPIT

- Large cockpit usable as a deck saloon, protected by a hard top bimini
- Cockpit flush-decked with the saloon
- Non-skid composite cockpit floor
- U-shaped bench seat to starboard with storage locker
- Polyester cockpit table
- Cupboard on starboard side: storage tray under flap + access to the outside waste bin 20 L / 5 US gal + storage with front door and shelves (essential equipment) (Ice maker option)
- Cupboard on port side: cup holders + storage with front door and shelves (essential equipment) (Fridge option)
- 1 Lounger with locker under the seat

HELM STATION

- Composite staircases to access from the cockpit on port side, gas locker (13kg) and storage under the staircase
- Helmsman bench with 2 seats
- Leather covered s/s steering wheel diameter 900mm
- Console for screen and instrumentation
- Cup holder
- Storage area next to the helm station with s/s lining
- Composite storage locker with flaps for halyard stowage (under the staircase to access to the coachroof, along the saloon/cockpit bulkhead)
- Large sunbathing area on the coachroof

FORWARD COCKPIT

- U-shaped bench seating area
- Storage locker on port side
- Anchor locker to starboard
- 1 deck hatch to access to the technical compartment with the service batteries
- Trampoline (nylon)

BOW LOCKERS

- Access through opening deck hatches LEWMAR T60
- S/S ladder
- White painting

- Lighting
- Wooden floors

STANCHIONS AND LIFE LINES

- Pushpits with flag support
- Stanchions: H 610mm / *24in*
- Double lifelines

Windows, openings and ventilation

- Sliding door
- Deck hatches:
 - Flush deck hatch T10 (quantity 6)
 - Flush deck hatch T44 (quantity 4)
 - Flush deck hatch T60 (quantity 2)
- Hull portholes
 - Fixed PMMA portholes (quantity 6) with integrated openings

Interior layout

GENERAL

- Interior woodwork in Alpi Walnut plywood
- Asburgo laminated floor
- S/S handrail leather covered
- Fabric-covered plywood ceiling panels or fiberglass liners in the saloon, cabins and bathrooms
- Fabric-covered plywood on hull liner in cabins

STANDING HEADROOM

Saloon:	2.15m / 7'1"
Cabin:	2.05 m / 6'9"
Bathroom:	2.05 m / 6'9"

MATTRESSES AND UPHOLSTERY

- Marine mattresses made of multi-layer alveolar foam with several densities (tick. 130mm / 5in)
- Mattresses treatment: anti-microbial, anti-bacterial, non-allergenic, anti-dust mite
- Standard upholstery as indicated on Lagoon sample book
- Synthetic fabrics adapted to marine environment:
 - washable (40°C / 104°F)
 - U.V. resistant
 - water repellent, with anti-stain treatment
- Blackout curtains in the cabins and saloon
- Mosquito screen and blinds for deck hatches

3 cabin 3 bathroom version



SALOON

- Sliding door and window with aluminum lock for the access to the cockpit, can be locked open or closed
- Large varnished saloon table exchangeable with the low table from the cockpit (option)
- 6-person L-shaped bench seat to starboard
- Lockers under the bench
- High-level cupboards with storage and shelves
- 4 under floor lockers
- Fabric covered steel mast support strut
- 4 opening hatches on the front windows

CHART TABLE

- Large instrumentation console with panel to install the electronics
- Stool
- Desk with flaps
- Stowage at access to technical equipment

GALLEY

- U-shaped galley to port
- Corian® Warm Grey countertop
- Spicerack
- Double s/s sink with hot/cold mixer tap
- Storage under the sink

- 1 storage under the countertop with 1 fridge (104L / 27 US gal) and 1 freezer (78L / 21 US gal)
- 1 vertical sliding storage-unit with 2 cutlery drawers and 1 high-level drawer
- 4 burner gas stove, with pan clamps
- Grill oven with s/s inside
- Flap under the oven
- Waste bin integrated in the countertop 50L / 13 US gal
- Pan storage under the countertop
- Unit with storage drawers (dishwasher option)
- High-level cupboards on portside (microwave option)
- 1 cabinet with 3 shelves in the companionway



PORT HULL

Aft cabin

- Access from the transom through a gull-wing door with lock and handrail
- 1 double bed with lateral access (2.05 x 1.60 m / 6'9" x 5'3")
- 2 bed nightstands, one with storage
- 1 under bed drawer
- Full high cupboard in 2 sections:
 - Upper part: 2 wardrobes + shelves
 - Lower part: shelves
- Desk with flap
- 3 drawers under the desk
- Desk height countertop along outboard hull
- Bookshelves on 2 levels
- 1 low cupboard with shelves
- 1 opening porthole

- 2 opening deck hatches
- 1 fixed hull window in PMMA black silkscreen printing 910x423mm /3'x1'5" with 1 integrated opening porthole

Aft bathroom

- Door for direct access to the bathroom with full-length mirror on the cabin side
- Synthetic resin countertop (WHITE) and sink
- Hot/cold mixer tap
- 2 tall cupboards 2 mirrored doors
- Shelves with s/s lining
- Non-slip composite floor
- Separate shower with tempered glass door
- Composite shower duckboard
- Storage in the composite block of the shower
- Fresh water manual toilet, large size
- 1 opening deck hatch

Forward cabin

- 1 double bed with lateral access (2.05 x 1.60 m / 6'9"x 5'3")
- 2 bed nightstands with storage
- 2 under bed drawers
- 1 cupboard with wardrobe (upper part) and shelves (lower part) – outboard side
- Bookshelves on 2 levels
- 2 opening deck hatches
- 1 fixed hull window in PMMA black silkscreen printing 910x423mm / 3'x1'5" with 1 integrated opening porthole

Forward bathroom

- Door for direct access to the bathroom with full-length mirror on the cabin side
- Synthetic resin countertop (WHITE) and sink
- Hot/cold mixer tap
- 2 tall cupboards 2 mirrored doors
- Non-slip composite floor
- Separate shower with tempered glass door
- Composite shower duckboard
- Storage in the composite block of the shower
- Fresh water manual toilet, large size
- 1 opening deck hatch

STARBOARD HULL

Aft cabin

- 1 double bed with lateral access (2.05 x 1.80 m / 6'9"x5'11")
- 1 bed nightstand with storage
- 2 x 2 under bed drawers
- 1 low cupboard with shelves – inboard side
- Storage cupboard – inboard side:
 - 2 wardrobes + shelves
 - Low cupboard with 3 drawers
 - High-level cupboard with flap
- Storage cupboard – outboard side:
 - 2 wardrobes + shelves, upper part
 - 3 drawers, lower part
- Desk with flaps and seat
- 3 drawers under the desk
- Desk height countertop along outboard hull
- 1 x 2-seater sofa
- Bookshelves on 2 levels
- 2 opening deck hatches
- 1 fixed hull window in PMMA black silkscreen printing 910x423mm / 3'x1'5" with 1 integrated opening porthole

Bathroom

- Door for direct access to the bathroom with full-length mirror on the cabin side
- Synthetic resin countertop (WHITE) and double sink
- Hot/cold mixer tap
- Above the sink:
 - High-level cupboards 2 mirrored doors
 - 4 storage areas at the countertop level
 - Storage column with shelves
- Under the countertop:
 - Cupboard 4 doors with shelves
 - 3 drawers
 - 1 flap
 - Non-slip composite floor
- 1 deck hatch opening on the shower
- Separate shower with tempered glass door
- Composite shower duckboard
- Storage in the composite block of the shower
- Folding teak seat
- 1 opening deck hatch
- Fresh water manual toilet, large size
- Low-level cupboard

- 1 fixed hull window in PMMA black silkscreen printing 910x423mm / 3'x1'5" with 1 integrated opening porthole

4 cabin 4 bathroom version



SALOON

- Sliding door and window with aluminum lock for the access to the cockpit, can be locked open or closed
- Large varnished saloon table exchangeable with the low table from the cockpit (option)
- 6-person L-shaped bench seat to starboard
- Lockers under the bench
- High-level cupboards with storage and shelves
- 4 under floor lockers
- Fabric covered steel mast support strut
- 4 opening hatches on the front windows

CHART TABLE

- Large instrument console with panel to install the electronics
- Stool
- Desk with flaps
- Storage and access to technical equipment

GALLEY

- U-shaped galley to port
- Corian® Warm Grey countertop
- Spicerack
- Double s/s sink with hot/cold mixer tap
- Storage under the sink

- 1 storage under the countertop with 1 fridge (104L / 27 US gal) and 1 freezer (78L / 21 US gal)
- 1 vertical sliding storage unit with 2 cutlery drawers and 1 high drawer
- 4 burner gas stove with pan clamps
- Grill oven with s/s inside
- Flap under the oven
- Waste bin integrated in the countertop 50L / 13 US gal
- Pan storage under the countertop
- Unit with storage drawers (dishwasher option)
- High-level cupboards on port side (microwave option)
- 1 cabinet with 3 shelves in the companionway



PORT HULL

Aft cabin

- Access from the transom through a gull-wing door with lock and handrail
- 1 double bed with lateral access (2.05 x 1.60 m / 6'9"x5'3")
- 2 bed nightstands, one with storage
- 1 under bed drawer
- Full high cupboard in 2 sections:
 - Upper part: 2 wardrobes + shelves
 - Lower part: shelves
- Desk with flap
- 3 drawers under the desk
- Desk height countertop along outboard hull
- Bookshelves on 2 levels
- 1 low cupboard with shelves

- 1 opening porthole
- 2 opening deck hatches
- 1 fixed hull window in PMMA black silkscreen printing 910x423mm / 3'x1'5" with 1 integrated opening porthole

Aft bathroom

- Door for direct access to the bathroom with full-length mirror on the cabin side
- Synthetic resin countertop (WHITE) and sink
- Hot/cold mixer tap
- 2 high-level cupboards 2 doors with mirror
- Shelves with s/s lining
- Non-slip composite floor
- Separate shower with tempered glass door
- Composite shower duckboard
- Storage in the composite block of the shower
- Fresh water manual toilet, large size
- 1 opening deck hatch

Forward cabin

- 1 double bed with lateral access (2.05 x 1.60 m / 6'9"x5'3")
- 2 bed nightstands with storage
- 2 under bed drawers
- 1 cupboard with wardrobe (upper part) and shelves (lower part) – outboard side
- Bookshelves on 2 levels
- 2 opening deck hatches
- 1 fixed hull window in PMMA black silkscreen printing 910x423mm / 3'x1'5" with 1 integrated opening porthole

Forward bathroom

- Door for direct access to the bathroom with full-length mirror on the cabin side
- Synthetic resin countertop (WHITE) and sink
- Hot/cold mixer tap
- 2 high-level cupboards 2 mirrored doors
- Non-slip composite floor
- Separate shower with tempered glass door
- Composite shower duckboard
- Storage in the composite block of the shower
- Fresh water manual toilet, large size
- 1 opening deck hatch

STARBOARD HULL

Aft cabin

- 1 double bed with lateral access (2.05 x 1.60 m / 6'9"x5'3")
- 2 bed nightstands with storage
- 2 x 2 under bed drawers
- Outboard side:
 - Desk with flap
 - 1 seat
 - 1 shelf
- Inboard side, full-height storage:
 - High cupboard
 - Central shelf
 - Drawer + double door cupboard + low countertop
 - Double wardrobe + 1 shelf
- 2 opening deck hatches
- 1 fixed hull window in PMMA black silkscreen printing 910x423mm / 3'x1'5" with 1 integrated opening porthole

Aft bathroom

- Bathroom opening to the cabin
- Synthetic resin countertop (WHITE) and sink
- Hot/cold mixer tap
- High-level cupboard 2 mirrored doors
- Low cupboard 2 doors and shelves
- 1 towel holder
- Separate shower with tempered glass door
- Composite shower duckboard
- Storage in the composite block of the shower
- Large window with opening porthole integrated on the back
- Separate toilet area with:
 - Fresh water manual toilet, large size
 - Toilet paper holder
 - Synthetic resin sink
 - Hot/cold mixer tap
 - 1 shelf
 - 1 low cupboard with towel holder
 - 1 opening deck hatch

Forward cabin

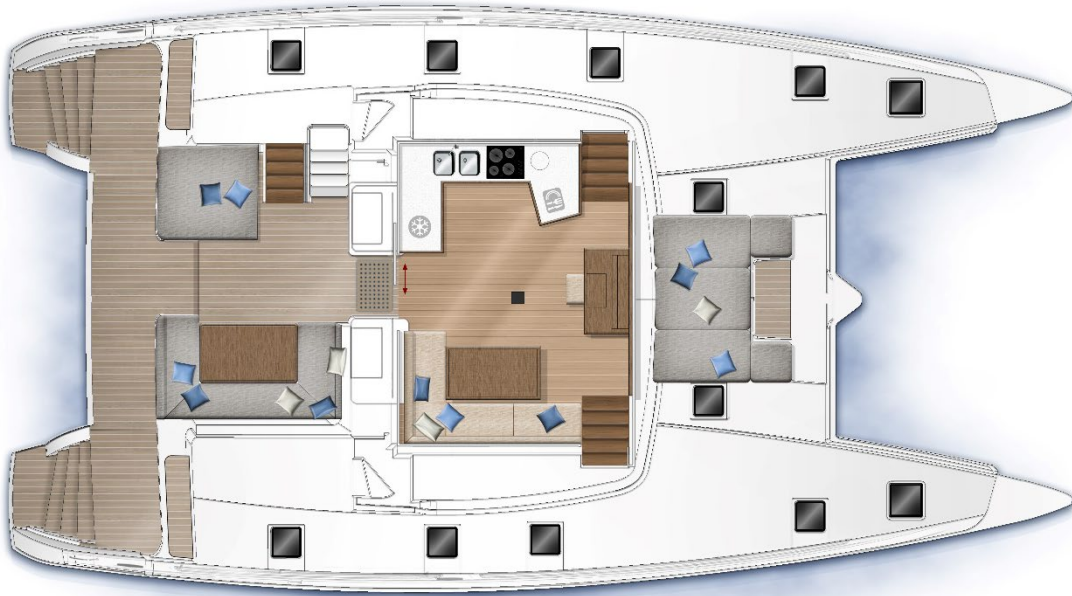
- 1 double bed with lateral access (2.05 x 1.60 m / 6'9"x5'3")
- 2 bed nightstands
- 2 under bed drawers

- Outboard side:
 - 1 bookshelf
 - 3 low-level cupboards
- 2 cupboards in front of the bed
- 1 opening deck hatch
- 1 fixed hull window in PMMA black silkscreen printing 910x423mm / 3'x1'5" with 1 integrated opening porthole

Forward bathroom

- Door for direct access to the bathroom with full high mirror on the cabin side
- Synthetic resin countertop (WHITE) and sink
- Hot/cold mixer tap
- 2 tall cupboards 2 mirrored doors
- High-level cupboard 2 doors with mirror
- Low cupboard 2 doors and shelves
- Non-slip composite floor
- Fresh water manual toilet, large size
- Separate shower with tempered glass door
- Composite shower duckboard
- Storage in the composite block of the shower
- 1 opening deck hatch

5 cabin 5 bathroom version



SALOON

- Sliding door and window with aluminum lock for the access to the cockpit, can be locked open or closed
- Large varnished saloon table exchangeable with the low table from the cockpit (option)
- 6-person L-shaped bench seat to starboard
- Lockers under the bench
- High-level cupboards with storage and shelves
- 4 under floor lockers
- Fabric covered steel mast support strut
- 4 opening hatches on the front windows

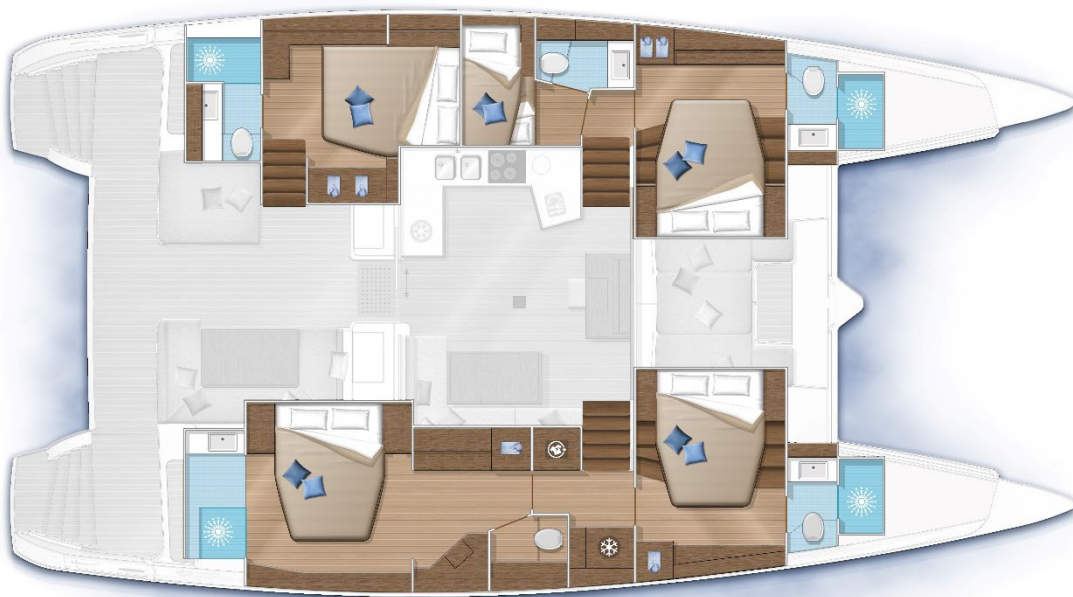
CHART TABLE

- Large instrument console with panel to install the electronics
- Stool
- Desk with flaps
- Storage and access to technical equipment

GALLEY

- U-shaped galley to port
- Corian® Warm Grey countertop
- Spicerack
- Double s/s sink with hot/cold mixer tap
- Storage under the sink

- 1 storage under the countertop with 1 fridge (104L / 27 US gal) and 1 freezer (78L / 21 US gal)
- 1 vertical sliding storage with 2 cutlery drawers and 1 high drawer
- 4 burner gas stove with pan clamps
- Grill oven with s/s inside
- Flap under the oven
- Waste bin integrated in the countertop 50L / 13 US gal
- Pan storage under the countertop
- Unit with storage drawers (dishwasher option)
- High cupboards on port side (microwave option)
- 1 cabinet with 3 shelves in the companionway



PORT HULL

Aft cabin

- Access from the transom through a gull-wing door with lock and handrail
- 1 double bed with lateral access (2.05 x 1.60 m / 6'9"x5'3")
- 2 bed nightstands, one with storage
- 1 under bed drawer
- Full-height cupboard with 2 wardrobes and shelves
- Desk with flap
- 3 drawers under the desk
- Desk height countertop along outside hull
- Bookshelves on 2 levels
- 1 opening porthole
- 2 opening deck hatches
- 1 fixed hull window in PMMA black silkscreen printing 910x423mm / 3'x1'5" with 1 integrated opening porthole

Aft bathroom

- Door for direct access to the bathroom with full-length mirror on the cabin side
- Synthetic resin countertop (WHITE) and sink
- Hot/cold mixer tap
- 2 high cupboards 2 mirrored doors
- 2 low cupboards 2 doors with shelves
- Storage with tilting door
- 3 Shelves with s/s lining
- Non-slip composite floor
- Fresh water manual toilet, large size
- Separate shower with tempered glass door
- Composite shower duckboard
- Storage in the composite block of the shower
- 1 opening deck hatch

Midships cabin

- 2 bunk beds with lateral access (2.05 x 0.90 m / 6'9"x2'11")
- 1 storage at the head of the bed
- 1 storage at the foot of the bed
- Large under bed storage
- Tall cabinet 2 doors with wardrobe and shelf
- 1 opening hull porthole

Midships bathroom

- Door for direct access to the bathroom with full-length mirror on the cabin side
- Synthetic resin countertop (WHITE) and sink
- Hot/cold mixer tap
- 2 high-level cupboards 2 mirrored doors
- 2 low cupboards 2 doors with shelves
- Non-slip composite floor
- Integrated shower with PMMA separation
- Storage in the composite block of the shower
- Fresh water manual toilet, large size
- 1 opening deck hatch

Forward cabin

- 1 double bed with lateral access (2.05 x 1.60 m / 6'9"x5'3")
- 2 bed nightstands
- 2 under bed drawers
- 1 wardrobe – outboard side

- Bookshelves on 2 levels
- 1 opening deck hatch
- 1 fixed hull window in PMMA black silkscreen printing 910x423mm / 3'x1'5" with 1 integrated opening porthole

Forward bathroom

- Door for direct access to the bathroom with full-length mirror on the cabin side
- Synthetic resin countertop (WHITE) and sink
- Hot/cold mixer tap
- High-level cupboards 2 doors with mirror
- Low cupboards 2 doors with shelves
- Non-slip composite floor
- Fresh water manual toilet, large size
- Separate shower with tempered glass door
- Composite shower grating
- Storage in the composite block of the shower
- 1 opening deck hatch

STARBOARD HULL

Aft cabin

- 1 double bed with lateral access (2.05 x 1.60 m / 6'9"x5'3")
- 2 bed nightstands with storage
- 2 x 2 under bed drawers
- Outboard side:
 - Desk with flap
 - 1 seat
 - 1 shelf
- Inboard side, full-height storage:
 - High cupboard
 - Central shelf
 - Drawer + double door cupboard + low countertop
 - Double wardrobe + 1 shelf
- 2 opening deck hatches
- 1 fixed hull window in PMMA black silkscreen printing 910x423mm / 3'x1'5" with 1 integrated opening porthole

Aft bathroom

- Bathroom opening to the cabin
- Synthetic resin countertop (WHITE) and sink
- Hot/cold mixer tap

- High-level cupboard 2 mirrored doors
- Low cupboard 2 doors and shelves
- 1 towel holder
- Separate shower with tempered glass door
- Composite shower duckboard
- Storage in the composite block of the shower
- Large window with opening porthole integrated on the back
- Separate toilet area with:
 - Fresh water manual toilet, large size
 - Toilet paper holder
 - Synthetic resin sink
 - Hot/cold mixer tap
 - 1 shelf
 - 1 low cupboard with towel holder
 - 1 opening deck hatch

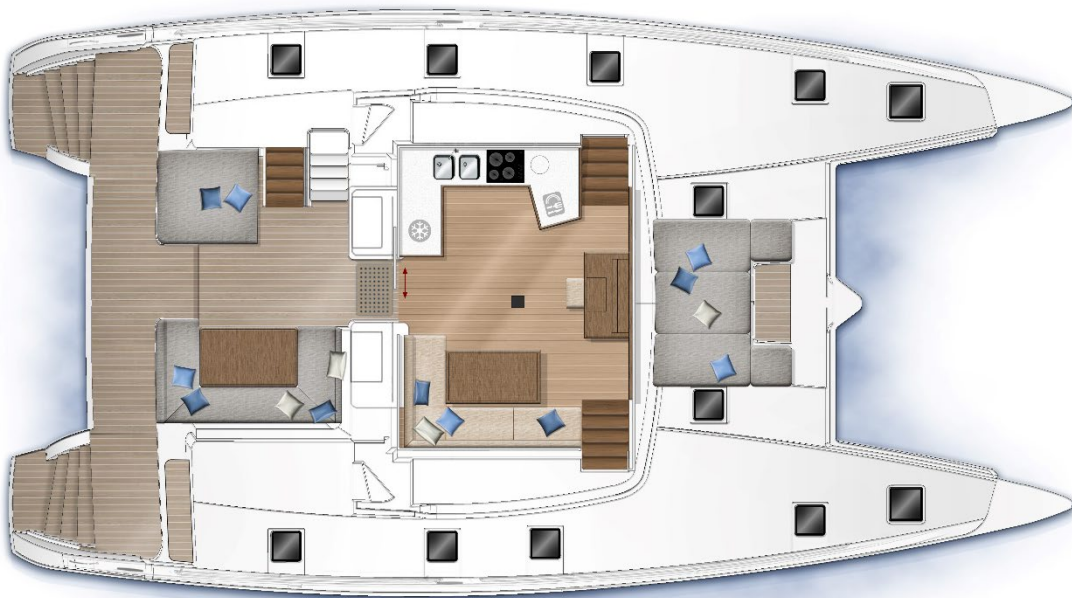
FORWARD CABIN

- 1 double bed with lateral access (2.05 x 1.60 m / 6'9"x5'3")
- 2 bed nightstands
- 2 under bed drawers
- Outboard side:
 - 1 bookshelf
 - 3 low cupboards
- 2 cupboards in front of the bed
- 1 opening deck hatch
- 1 fixed hull window in PMMA black silkscreen printing 910x423mm / 3'x1'5" with 1 integrated opening porthole

FORWARD BATHROOM

- Door for direct access to the bathroom with full-length mirror on the cabin side
- Synthetic resin countertop (WHITE) and sink
- Hot/cold mixer tap
- 2 tall cupboards 2 mirrored doors
- High cupboard 2 mirrored doors
- Low cupboard 2 doors and shelves
- Non-slip composite floor
- Fresh water manual toilet, large size
- Separate shower with tempered glass door
- Composite shower duckboard
- Storage in the composite block of the shower
- 1 opening deck hatch

6 cabin 6 bathroom version



SALOON

- Sliding door and window with aluminum lock for the access to the cockpit, can be locked open or closed
- Large varnished saloon table exchangeable with the low table from the cockpit (option)
- 6-person L-shaped bench seat to starboard
- Lockers under the bench
- High-level cupboards with storage and shelves
- 4 under floor lockers
- Fabric covered steel mast support strut
- 4 opening hatches on the front windows

CHART TABLE

- Large instrument console with panel to install the electronics
- Stool
- Desk with flaps
- Storage and access to technical equipment

GALLEY

- U-shaped galley to port
- Corian® Warm Grey countertop
- Spicerack
- Double s/s sink with hot/cold mixer tap
- Storage under the sink

- 1 large combined fridge (338 L / 89 US gal) and freezer (82 L / 22 US gal)
- 1 vertical sliding storage with 2 cutlery drawers and 1 high-level drawer
- 4 burner gas stove with pan clamps
- Grill oven with s/s inside
- Flap under the oven
- Waste bin integrated in the countertop 50L / 13 US gal
- Pan storage under the countertop
- Unit with storage drawers (dishwasher option)
- High-level cupboards on portside (microwave option)
- 1 cabinet with 3 shelves in the companionway



PORT HULL

Aft cabin

- Access from the transom through a gull-wing door with lock and handrail
- 1 double bed with lateral access (2.05 x 1.60 m / 6'9"x5'3")
- 2 bed nightstands, one with storage
- 1 under bed drawer
- Full-height cupboard with 2 wardrobes and shelves
- Desk with flap
- 3 drawers under the desk
- Desk height countertop along outboard hull
- Bookshelves on 2 levels
- 1 opening porthole
- 2 opening deck hatches
- 1 fixed hull window in PMMA black silkscreen printing 910x423mm / 3'x1'5" with 1 integrated opening porthole

Aft bathroom

- Door for direct access to the bathroom with full-length mirror on the cabin side
- Synthetic resin countertop (WHITE) and sink
- Hot/cold mixer tap
- 2 high-level cupboards 2 doors with mirror
- 2 low cupboards 2 doors with shelves
- Storage with tilting door
- 3 Shelves with s/s lining
- Non-slip composite floor
- Fresh water manual toilet, large size
- Separate shower with tempered glass door
- Composite shower duckboard
- Storage in the composite block of the shower
- 1 opening deck hatch

Midships cabin

- 2 bunk beds with lateral access (2.05 x 0.90 m / 6'9"x2'11")
- 1 storage at the head of the bed
- 1 storage at the foot of the bed
- Large under bed storage
- Tall cabinet 2 doors with wardrobe and shelf
- 1 opening hull porthole

Midships bathroom

- Door for direct access to the bathroom with full-length mirror on the cabin side
- Synthetic resin countertop (WHITE) and sink
- Hot/cold mixer tap
- 2 high-level cupboards 2 mirrored doors
- 2 low cupboards 2 doors with shelves
- Non-slip composite floor
- Integrated shower with PMMA separation
- Storage in the composite block of the shower
- Fresh water manual toilet, large size
- 1 opening deck hatch

Forward cabin

- 1 double bed with lateral access (2.05 x 1.60 m / 6'9"x5'3")
- 2 bed nightstands
- 2 under bed drawers
- 1 wardrobe – outboard side
- Bookshelves on 2 levels

- 1 opening deck hatch
- 1 fixed hull window in PMMA black silkscreen printing 910x423mm / 3'x1'5" with 1 integrated opening porthole

Forward bathroom

- Door for direct access to the bathroom with full-length mirror on the cabin side
- Synthetic resin countertop (WHITE) and sink
- Hot/cold mixer tap
- High cupboards 2 mirrored doors
- Low cupboards 2 doors with shelves
- Non-slip composite floor
- Fresh water manual toilet, large size
- Separate shower with tempered glass door
- Composite shower duckboard
- Storage in the composite block of the shower
- 1 opening deck hatch

STARBOARD HULL

Aft cabin

- Access from the aft transom
- Teak steps on s/s frame
- 1 double bed with lateral access (2.05 x 1.60 m / 6'9"x5'3")
- 1 bed nightstand
- 1 under bed drawer
- 2 opening deck hatches
- 1 fixed hull window in PMMA black silkscreen printing 910x423mm / 3'x1'5" with 1 integrated opening porthole

Aft bathroom

- Door for direct access to the bathroom with full high mirror on the cabin side
- Synthetic resin countertop (WHITE) and sink
- Hot/cold mixer tap
- High cupboards 2 doors with mirror
- Low cupboards 2 doors with shelves
- Non-slip composite floor
- Fresh water manual toilet, large size
- Separate shower with tempered glass door
- Composite shower grating
- Storage in the composite block of the shower
- 1 opening deck hatch

Midships cabin

- 1 double bed with lateral access (2.05 x 1.60 m / 6'9"x5'3")
- 1 bed nightstand
- 1 under bed drawer
- 1 opening hull porthole

Midships bathroom

- Door for direct access to the bathroom with full-length mirror on the cabin side
- Synthetic resin countertop (WHITE) and sink
- Hot/cold mixer tap
- 2 high cupboards 2 mirrored doors
- 2 low cupboards 2 doors with shelves
- Non-slip composite floor
- Integrated shower with PMMA separation
- Storage in the composite block of the shower
- Fresh water manual toilet, large size
- 1 opening deck hatch

Forward cabin

- 1 double bed with lateral access (2.05 x 1.60 m / 6'9"x5'3")
- 2 bed nightstands
- 2 under bed drawers
- 1 wardrobe – outboard side
- Bookshelves on 2 levels
- 1 opening deck hatch
- 1 fixed hull window in PMMA black silkscreen printing 910x423mm / 3'x1'5" with 1 integrated opening porthole

Forward bathroom

- Door for direct access to the bathroom with full-length mirror on the cabin side
- Synthetic resin countertop (WHITE) and sink
- Hot/cold mixer tap
- High-level cupboards 2 mirrored doors
- Low cupboards 2 doors with shelves
- Non-slip composite floor
- Fresh water manual toilet, large size
- Separate shower with tempered glass door
- Composite shower duckboard
- Storage in the composite block of the shower
- 1 opening deck hatch



LAGOON

162, quai de Brazza
CS 81217
33072 Bordeaux Cedex - France
Tél. 33 + (0) 557 80 92 80
E-mail : info@cata-lagoon.com
www.cata-lagoon.com